

KING EDWARD VI COLLEGE  
STOURBRIDGE  
— EST. 1552 —

Where  
ambitious  
minds thrive.





King Ed's is a place where ambitious minds thrive, diversity is celebrated and individuality is valued.

# Contents

<b>Welcome</b>	<b>4</b>
<b>Where ambitious minds thrive</b>	<b>6</b>
<b>Courses offered</b>	<b>8</b>
<b>Applying to King Ed's</b>	<b>48</b>
<b>Student support</b>	<b>50</b>
<b>Extra curricular opportunities</b>	<b>52</b>
<b>Additional qualifications</b>	<b>54</b>



A mark of enduring excellence.



# Welcome to King Ed's

There is a certain uniqueness about King Ed's that attracts inquisitive and committed students to begin their post-16 educational journey here. It is this distinct quality which invites us all, students and staff, to listen, collaborate and learn from each other.

In the classroom our students engage with teachers who are experts in their fields, passionate about their subjects and dedicated to cultivating curious minds. Our teachers encourage and support our students throughout their academic journey.



At King Ed's our students get to know many of our excellent operational staff who ensure that the college runs smoothly and that every single student receives the support needed to excel. We have big hopes for every student who walks through our doors and we work hard to ensure our students have bright futures.

King Ed's is a place where ambitious minds thrive, where diversity is celebrated and where individuality is valued. Our students develop academically, creatively and personally, respecting and appreciating each other's achievements, while taking pride in their own.

*Remley Mann*  
PRINCIPAL





# Where ambitious minds thrive

King Edward VI College is not only the largest, but also one of the most successful sixth form providers in the Black Country. Each year, over a thousand young people complete their A level qualifications at King Ed's, going on to be just as successful in employment and at university.

Statistics published in 2020 by the Department for Education unequivocally demonstrate that King Ed's students 'stay the course' and are statistically more likely to achieve three A levels than students at any other local provider. At King Ed's more students progress from year 12 to year 13 and more complete all three of their A levels. The average grade achieved by a King Ed's student is a B with over 8 out of 10 results at C or above.

Furthermore, the most recent report from the Higher Education Statistics Agency (HESA) reveals that if a King Ed's student chooses to go to university, the preparation they receive at King Ed's means that on average they are more likely to achieve a first or upper second class degree than students in the state and independent sectors.



On average our students are more likely to achieve a first or upper second class degree than students from other state schools or the independent sector.

2019 HESA data



# Courses offered

A levels are challenging and exciting! We offer a breadth of subjects, with any combination of courses, tailoring your programme of study to suit you. The majority of students will select three subjects; however, some students may decide to study four A level subjects. When making your selection, remember that students who choose subjects they enjoy tend to get the most out of their studies.

Accounting	English literature	Maths and further maths
Applied science (BTEC)	Film studies	Media studies
Biology	Fine art	Music
Business	French	Philosophy
Chemistry	Geography	Physical education
Classical civilisation	Geology	Physics
Computer science	Graphic communication	Politics
Criminology (Level 3 diploma)	History - early modern	Psychology
Dance	History - modern	Religious studies
Drama and theatre studies	History of art	Sociology
Economics	Law	Spanish
English language and literature	Mathematics	Statistics
		Textile design

# Accounting

## What is accounting?

Accounting is the recording, reporting, presentation, and interpretation of financial information which takes place for businesses of all sizes. Chartered accountants operate at the highest levels of business management.

## What will I study?

A detailed introduction to the subject, studying the role of the accountant and the underlying principles and concepts of accounting. You will learn about financial records, double entry bookkeeping, the presentation of financial information and the analysis of financial statements and business performance. Assessment is focused on processing numerical and written data, presenting information in a prescribed format and interpreting information in written form.

## What can it lead to?

Many students go on to study accountancy at university or enter the profession through apprenticeships with the big 4, mid and small tier accountancy firms.

## TRIPS, VISITS AND ENRICHMENT

- Certificate in financial studies (level 3 qualification in personal finance)
- Speakers from professional accounting bodies and accounting firms

## SPECIAL ENTRY REQUIREMENTS

GCSE grade 5 in maths and English.

# Applied science

## What is applied science?

Applied science is the study of biology, chemistry and physics but with a greater focus on how skills in each are used and applied in various real-world scenarios, job sectors and industries. The BTEC applied science is equivalent to a full A level.

## What will I study?

You will study four units. Unit 1 is Principles of Science and will cover content from A levels in all three science subjects. Unit 2 is Scientific Procedures, assessing practical and experimental techniques. Unit 3 is Investigation Skills and will assess your ability to plan and carry out a scientific investigation. Unit 4 is the optional unit and can be chosen from a range of units across the sciences. You will be assessed via both coursework and exam.

## What can it lead to?

Applied science is studied alongside two other A levels and students can progress to university or to take further professional qualifications.

### TRIPS, VISITS AND ENRICHMENT

- Speakers from universities
- Local and national careers advice from organisations such as the NHS

### SPECIAL ENTRY REQUIREMENTS

There are no specific entry requirements for this subject.

# Biology

## What is biology?

Biology is described as the 'science of life' and biologists work in many different and diverse fields, including cell biology, medicine, food production and ecology.

## What will I study?

The biology course is divided into six modules covering topics including cell biology, biochemistry, DNA structure, function and cell division, gas exchange in animals and transport in plants and animals, disease and the immune response.

You will study biodiversity and classification of plants and animals, the biochemistry of photosynthesis and respiration and research into genetic inheritance, control of gene expression, gene technology, cloning and biotechnology, and ecology.

## What can it lead to?

A level biology is a key component in higher education applications for medicine, veterinary science, healthcare science, dentistry, nursing, horticulture, teaching, fisheries and conservation work.

### TRIPS, VISITS AND ENRICHMENT

- Teacher-led preparation for BMAT (BioMedical Admissions Test – an entry requirement for some medical and dentistry courses)
- Ecological study of Mary Stevens Park
- Optional residential field-course, usually to Dale Fort, Pembrokeshire

### SPECIAL ENTRY REQUIREMENTS

GCSE grades 6-6 in combined science or a grade 6 in biology (if studied as a separate science) and in maths.

# Business

## What is business?

Business is a dynamic subject which is relevant, engaging and topical. Studying the subject can give you the tools and information required to understand how businesses are created, managed and become successful while managing the external environment around them.

## What will I study?

You will study the four main areas of business: finance, marketing, operations and people. You will consider how businesses develop and implement strategy and look at the models and theories they use. You will study the political, economic, social and environmental impacts on decision making and performance. You will look at current issues within business, for example, new legislation, technologies, changing social trends, ethics and Brexit.

## What can it lead to?

Business students tend to progress on to a variety of different courses at university, or use their skills in business to enter employment, self-employment or an apprenticeship.

## TRIPS, VISITS AND ENRICHMENT

- Visiting speakers from professional companies and universities
- Participation in field trips and overseas visits
- Visits to London and the Bank of England

## SPECIAL ENTRY REQUIREMENTS

There are no specific entry requirements for this subject.

# Chemistry

## What is chemistry?

Chemistry is the study of substances, what they are made of, how they interact and what role they play in living things. Chemistry is a highly valued and necessary qualification, required by universities when applying to study degrees in chemistry, medicine, veterinary medicine, pharmaceuticals and dentistry.

## What will I study?

The first year of the A level course will cover organic chemistry, including alkanes, alkenes, alcohols, haloalkanes and organic synthesis reactions, the inorganic/physical chemistry including moles, bonding and structure, redox reactions, energy changes, reversible reactions and equilibria. In the second year you will develop a deeper knowledge and understanding and prepare for the external examinations. The course also includes a non-exam assessment practical endorsement.

## What can it lead to?

Students progress to degree programmes including chemistry and chemical engineering, medical courses such as medicine, pharmacy, optometry, biomedical science, veterinary medicine and dentistry. Biochemistry and related subjects are also followed.

## TRIPS, VISITS AND ENRICHMENT

- The chemistry Olympiad
- Many chemistry students are involved with the student-led medical ethics enrichment activity

## SPECIAL ENTRY REQUIREMENTS

GCSE grades 6-6 in combined science or a grade 6 in chemistry (if studied as a separate science) and in maths.

# Classical civilisation

## What is classical civilisation?

Classical civilisation explores the values and cultural beliefs of classical Greece and Rome, the two societies which are the bedrock of modern European society. Classical civilisation is an academically demanding, exciting and engaging course that develops a huge variety of skills related to literature, philosophy, history, art and architecture.

## What will I study?

In year 12, you will study 'Homer's Iliad' and 'The World of the Hero' which is split over two years. In year 13 you'll discover Virgil's 'The Aeneid', complemented by 'The Invention of the Barbarian' which uses Herodotus' 'Histories' and Athenian tragedy to discuss and explore political, historical and philosophical events and beliefs. The final unit is the 'Politics of the Late Republic' exploring the people (Julius Caesar, Pompey the Great, Cicero et al) and events that led Rome to becoming an empire.

## What can it lead to?

Whilst many students go on to study classical subjects at university, the analytical thinking and writing skills students develop through the subject will help in many other areas of study and are also highly valued by universities and employers.

## TRIPS, VISITS AND ENRICHMENT

- Visits to the theatre, conferences and the British Museum
- Annual trips to Greece and Rome
- There is an informal Greek lunchtime class to help expand your knowledge of the classical world and a student-led classics society

## SPECIAL ENTRY REQUIREMENTS

GCSE grade 5 in either English language, English literature or history.

# Computer science

## What is computer science?

Computer science is not about using computers; it is about controlling and shaping the digital world through programming. To succeed you need to enjoy logical, mathematical problem solving.

## What will I study?

You will concentrate on developing problem-solving approaches and the practical skills of programming which will give you an insight into how the computer works. We use python as the main teaching language but you will be introduced to a range of programming languages and techniques and explore technology developments such as Cloud computing, functional computing and big data.

## What can it lead to?

Many students continue to study computer science or related courses at university, and go on to careers in computer gaming, engineering, finance and software development.

## TRIPS, VISITS AND ENRICHMENT

- Trip to the National Museum of Computing at Bletchley Park
- Student led Python programming club

## SPECIAL ENTRY REQUIREMENTS

GCSE grade 7 in maths or a GCSE grade 6 in both computer science and maths.



# Criminology

## What is criminology?

Criminology is the scientific study of crime, criminals, and the criminal justice system. Criminologists investigate different types of crime and suggest ways in which crime can be prevented and try to provide explanations for criminal behaviour, whilst also identifying and supporting the victims. The Diploma in Criminology is equivalent to one A level.

## What will I study?

You will study criminal psychology, law and sociology. Unit one explores types of crime, assesses how crime reporting affects public perception and how campaigns are used to bring about change. You will plan a campaign of your own. Unit two focusses on explaining crime using a variety of theories. Unit three centres on understanding the process of criminal investigations from crime-scene to courtroom. Unit four looks at the criminal justice system including law-making and types of punishment.

## What can it lead to?

This course is particularly suitable for degrees in criminology, law, psychology and sociology. The qualification also provides the skills required within areas of the criminal justice system such as the police, probation, and court services.

## TRIPS, VISITS AND ENRICHMENT

- Trips to Magistrates' and Crown Courts
- Guest speakers from industry professionals
- Online workshops with UK Parliament

## SPECIAL ENTRY REQUIREMENTS

There are no specific entry requirements for this subject.

# Dance

## What is dance?

Dance is an exciting subject that challenges you physically, academically and creatively. If you want to be physically active, enjoy watching live and recorded performances and want to discover more about the history and development of modern dance in Britain, this is an ideal course for you.

## What will I study?

You will widen your experience and knowledge of dance through technique lessons, creative exploration and theoretical analysis. In practical lessons you develop your choreographic skills and the technical and expressive skills required to perform solo and in groups for practical assessments. Theory lessons are based on areas of study and set works, allowing you to engage critically to understand the interrelationship between the creation, presentation and viewing/appreciation of dance.

## What can it lead to?

Students choose to study dance for a variety of reasons; it may be a passion, future career aim, or perhaps to contrast two purely theoretical courses to add variety to a programme of study. A level dance can be the first step towards working within the arts industry and there are numerous degree courses at universities and specialist vocational dance and performing arts schools to further your studies.

## TRIPS, VISITS AND ENRICHMENT

- Regular trips to see performances by a range of choreographers
- Practical workshops led by professional dancers or teachers from university courses/conservatoires
- Public performances and an option to join the college dance company

## SPECIAL ENTRY REQUIREMENTS

Recent dance experience at a dance or theatre school, and/or GCSE grade 4/BTEC in dance.

# Drama and theatre studies

## What is drama and theatre studies?

You will explore what makes great theatre work: the craft of the playwright, the director's interpretation, the work of performers, and the contribution of technical and design elements.

## What will I study?

You will study two challenging and exciting set plays and practically explore three others, performing substantial extracts from each. You will also have the opportunity to devise an original piece of theatre from a stimulus. All of your practical work will be informed by your research into the very best theatre practitioners.

## What can it lead to?

Students go on to study a range of subjects at university. Many of our students have gained places at prestigious drama schools before pursuing successful careers in theatre and performance. Former students have taken lead roles in West End productions of Dear Evan Hansen, War Horse, The Curious Incident of the Dog in the Night Time and Dirty Dancing. Drama is an excellent qualification for a wide range of professions.

### TRIPS, VISITS AND ENRICHMENT

- Theatre visits to the West End
- College productions
- Audition preparation

### SPECIAL ENTRY REQUIREMENTS

GCSE grade 5 in either English language or English literature. Some stage experience is desirable.

# Economics

## What is economics?

Economics is the study of choice and decision-making in a world with limited resources. It examines how societies allocate scarce resources to meet the needs and wants of their citizens.

## What will I study?

You will investigate both micro and macro-economic topics during the two years. Micro topics include how markets work, why markets fail, market structures and labour markets. Macro topics will cover aggregate supply and demand, fiscal and monetary policy, financial markets and international trade and globalisation. All students will complete three exams at the end of their two-year study programme.

## What can it lead to?

Many students go on to study economics at university as it is a highly regarded degree choice and provides opportunities for careers within government, banking, accountancy, management and investment.

### TRIPS, VISITS AND ENRICHMENT

- University masterclasses
- Trip to the Bank of England
- New York and Washington trip

### SPECIAL ENTRY REQUIREMENTS

GCSE grade 6 in GCSE English language or English literature and a GCSE grade 5 in maths.

# English language and literature

## What is English language and literature? What will I study?

This course combines the most enjoyable parts of literature and language study. You will develop your skills as a reader, writer and communicator, learning how language works in a range of situations.

You will compare Dracula by Bram Stoker and Twelfth Night by William Shakespeare, exploring how each author uses language to present key characters and themes. You will also study an anthology of non-fiction texts and the play A Streetcar Named Desire by Tennessee Williams. You will also enhance your ability to identify how language is used for specific audiences and purposes and learn how to critically respond to a range of texts, alongside writing your own fiction and non-fiction pieces for coursework.

## What can it lead to?

Most students who study English language and literature go on to study similar courses at various universities, including Oxbridge and higher tariff universities. English is a core subject that can lead to a wide variety of careers.

## TRIPS, VISITS AND ENRICHMENT

- Trips to the theatre and cinema to see productions of set texts
- Creative writing

## SPECIAL ENTRY REQUIREMENTS

GCSE grade 6 in either English language or English literature.

# English literature

## What is English literature?

You will study prose, poetry and drama texts and develop your skills in critical analysis. You will review modern texts and texts from previous centuries whilst undertaking independent reading.

## What will I study?

You will study a wide range of texts and will be encouraged to become an active reader and offer opinions and ideas based on your own interpretations of literary texts, as well as considering the opinions of others. The texts you study will be from different social and historical contexts, including Shakespeare. You will also have the opportunity to study poetry published post 2000 and to develop your skills in analysing unseen poetry.

## What can it lead to?

Universities view English literature favourably, as you have carried out extensive reading and critical analysis. It is also an excellent qualification for a very wide range of professions.

## TRIPS, VISITS AND ENRICHMENT

- Trips to theatres, and a wide range of revision lectures
- Various student-led enrichment groups, including creative writing
- Annual poetry competition
- Guest speakers as part of the Aspire programme

## SPECIAL ENTRY REQUIREMENTS

GCSE grade 6 in either English language or English literature.

# Film studies

## What is film studies?

Film studies mixes the analytical study of modern British and American film with the study of classical Hollywood and foreign cinema in context. It also focusses on the practical aspects of film making and developing scripting, storyboarding and film making skills.

## What will I study?

You will study a range of popular British and American cinema, learning about film language, such as sound, lighting, editing, performance and cinematography, as well as theoretical elements such as representation, narrative, ideology and auteur theory. Films studied include Inception, La La Land, Shaun of the Dead and Pulp Fiction. You are encouraged to keep a portfolio workbook of practical work, planning and film ideas. Coursework involves planning, developing and evaluating a short film project.

## What can it lead to?

Students choose to pursue either full academic, or practical film making degrees. A number of ex-students work in the film, television or media industries, including on shows such as The Apprentice and Britain's Got Talent.

## TRIPS, VISITS AND ENRICHMENT

- Trips to working film sets where possible
- Yearly trip to Warner Brothers' Leavesden studio

## SPECIAL ENTRY REQUIREMENTS

GCSE grade 5 in either English language or English literature.

# Fine art

## What is fine art?

Fine art is an exciting course that will challenge your creativity, your technical ability and your conceptual knowledge. It is a broad course that allows you to develop as an artist and a creative thinker. You will learn how to use a wide range of traditional and contemporary media. You will also develop your critical thinking skills through discussions, analysis of works and visiting galleries.

## What will I study?

You start with studio-based sessions exploring a wide range of disciplines, covering both traditional media and contemporary methods, giving you the chance to explore outputs such as oil painting, etching, digital photography, sculpture and film. You will be given opportunities to explore your own concepts in a series of smaller projects. Assessment is through two projects, choosing your focus and methods to suit your ideas. This gives you the power to investigate what you are interested in.

## What can it lead to?

Many of our students progress to study an arts foundation course. Students have studied a broad range of courses at university including fine art, architecture, illustration, interior design, photography and film.

## TRIPS, VISITS AND ENRICHMENT

- Studio time will occur throughout the week, allowing you to work independently as an artist
- Visiting galleries, including major exhibitions in London
- There will be the opportunity to visit a European city

## SPECIAL ENTRY REQUIREMENTS

GCSE grade 5 in a visual arts subject or submit a portfolio of current work for inspection by a member of the visual arts team.

# French

## What is French?

French is a widely taught language and is spoken in 29 countries by over 300 million people in the world.

## What will I study?

Building on the knowledge, understanding and skills gained at GCSE, you will learn an interesting spectrum of social, intellectual, historical and political cultural themes throughout the course. You will study both a film and a piece of literature and be asked to undertake a research piece into an area of personal interest in France or of a French speaking country to further develop your cultural awareness.

## What can it lead to?

The subject content is suitable for students who wish to progress to employment or to further study, including a modern languages degree. Students go on to study language at university leading to many different careers. Being fluent in a second language is highly respected in the business world.

## TRIPS, VISITS AND ENRICHMENT

- Annual trip to Paris
- Guest speakers as part of the Aspire programme
- Student led French speaking club

## SPECIAL ENTRY REQUIREMENTS

GCSE grade 6 in French.

# Geography

## What is geography?

In today's rapidly changing world the role of geography is of paramount importance. It involves the examination of environmental, social and economic changes and issues in both human and physical environments. We inhabit a dynamic, changing world facing many challenges. Geographers investigate these challenges and look at ways to solve them.

## What will I study?

A level geography covers two areas, physical and human geography. In physical geography, you study tectonic hazards, glaciated landscapes, water and carbon cycles, the weather and climate. The topics studied in human geography are changing places, global migration, governance of the oceans, energy challenges and 21st century challenges. You will also develop data collection and analysis skills which will help you in the completion of an independent investigation that forms the coursework component.

## What can it lead to?

Former students work as environmental impact officers, conservation officers, flood protection managers, climate and location analysts, urban regeneration planners, surveyors and heritage managers.

## TRIPS, VISITS AND ENRICHMENT

- Field trips locally, nationally and internationally

## SPECIAL ENTRY REQUIREMENTS

GCSE grade 5 in English language or English literature.



# Geology

## What is geology?

Geology is a detective story where you get to unravel how the planet works and gain an insight into its history and possible futures.

## What will I study?

Over the two-year course you will learn how to identify and interpret minerals, rocks, fossils and geological structures; how rocks form and deform through the study of plate tectonics; and how to interpret past climates using evidence. You will also study how natural resources form and how we exploit them, as well as various geo-hazards and how we can mitigate them.

## What can it lead to?

Many students study geology at university, leading to careers as geoscientists, who are in demand to search for natural energy and mineral resources and study global climate change.

## TRIPS, VISITS AND ENRICHMENT

- Local day trips and a residential trip to the Lake District
- There are also optional international trips

## SPECIAL ENTRY REQUIREMENTS

There are no specific entry requirements for this subject.

# Graphic communication

## What is graphic communication?

Graphic communication is the process of communicating and problem-solving through visual means. Graphic designers create, control and combine symbols, images and text to communicate visual meaning, messages and moods.

## What will I study?

You will cover many topics and develop your skills by exploring traditional and digital techniques including drawing, illustration, typography, photography and print-making, working with both 2D and 3D media and processes. Through concept-based design briefs, you will be introduced to a wide range of applications for design work. You will learn to develop and apply your graphic techniques and will be expected to record your ideas and show their development.

## What can it lead to?

Many students go on to study visual communications, graphic design, illustration or other art and design courses at university with many going on to work within the UK's vast creative industries. There are also opportunities to enter apprenticeships in design roles that offer a more immediate path to industry.

## TRIPS, VISITS AND ENRICHMENT

- Research visit to the Pitt Rivers museum to gather imagery and contextual sources
- Visit to an annual graduate design exhibition such as 'New Designers' or 'New Blood'

## SPECIAL ENTRY REQUIREMENTS

GCSE grade 5 in a visual arts subject or submit a portfolio of current work for inspection by a member of the visual arts team.

# History – early modern

## What is history - early modern?

The early modern history course covers a period of over 200 years, from the fifteenth century to the late seventeenth century.

## What will I study?

The early modern history course is divided into four units, the first covers The Stuarts from 1603–1660. Unit two delves into the history of Spain from 1469–1556. Unit three explores the fascinating witch craze and popular culture in the 16th and 17th centuries. The final unit is an independent research essay from a selection of titles offered to you.

## What can it lead to?

History is a course highly regarded by universities and is a recognised route into a wide range of careers.

## TRIPS, VISITS AND ENRICHMENT

- Students attend lectures by academic historians and have visited the Commandery Museum in Worcester to find out more about the English Civil War
- Overseas trips to St Petersburg and Moscow have taken place

## SPECIAL ENTRY REQUIREMENTS

GCSE grade 6 in either English language or English literature or history.

# History – modern

## What is history - modern?

Modern history covers the period from the eighteenth century to the present.

## What will I study?

The modern history course is divided into four units, the first unit covers the history of Britain from 1900–1951. Unit two looks into the course of the American Revolution from 1740–1796. Unit three covers Russia and its rulers from 1855–1964. The final unit is an independent research essay from a selection of titles offered to you.

## What can it lead to?

History is a course highly regarded by universities and is a recognised route into a wide range of careers.

## TRIPS, VISITS AND ENRICHMENT

- Students attend lectures by academic historians
- Students have visited St Petersburg and Moscow in past years
- Visit to the People's History Museum in Manchester

## SPECIAL ENTRY REQUIREMENTS

GCSE grade 6 in either English language or English literature or history.

# History of art

## What is history of art?

History of art enables you to explore many aspects of art and architecture from around the world. You learn how to analyse and interpret architecture, painting and sculpture within its historical and artistic context.

## What will I study?

In developing the skills of analysis and interpretation, you will look at a wide range of examples of art and architecture drawn from ancient Greece right through to the present day. You will study two themes - Identities and Nature. These themes enable you to look at developments in art and to make connections between movements and periods across time and place. You will also study two specific historical periods in depth renaissance art in Italy 1420-1520 and modernism in Europe 1900-1939.

## What can it lead to?

Many students have gone on to study history of art at university and gained careers in museums and art galleries. However, studying history of art is a stepping stone to a wide range of degree subjects and can lead to careers in diverse areas such as architecture, law and advertising.

## TRIPS, VISITS AND ENRICHMENT

- Two trips a year to major art galleries and current exhibitions

## SPECIAL ENTRY REQUIREMENTS

GCSE grade 5 in either English language or English literature or history.

# Law

## What is law?

Law is a subject which impacts on us all; you'll study how laws are made and the main principles of the English legal system.

## What will I study?

You will study the English legal system, law making and areas of both private and public law in England and Wales. Through the study of criminal law, the law of tort and contract law, you will learn, develop and apply the techniques of legal method and reasoning to analyse and offer answers to legal problems, and construct and communicate legal arguments.

## What can it lead to?

Our students go on to study a wide variety of degrees including the LLB and other law-related degrees. Some choose alternative pathways by becoming paralegals, legal apprentices or training to become legal executives.

## TRIPS, VISITS AND ENRICHMENT

- We visit courts in Birmingham to watch legal cases in action
- Participation in the national bar mock trial competition
- Speakers from the legal system deliver information sessions for law students

## SPECIAL ENTRY REQUIREMENTS

GCSE grade 5 in either English language or English literature.

# Mathematics

## What is mathematics?

This course is a great opportunity to enhance your problem-solving skills, add depth to your prior GCSE knowledge and discover new mathematical concepts. You should choose maths if you enjoy being challenged, if you feel the reward from persevering until you find a solution and you want to further develop your logical thinking skills.

## What will I study?

You'll study pure mathematics, developing your skills in algebra and trigonometry as well as introducing new topics such as calculus. You'll learn the application of statistical and probability models which allow for analysis in real world contexts. We also look at the use of technology when analysing large sets of data. Finally, you'll study mechanics, the mathematics of forces and motion, which will build on prior knowledge from the physics GCSE.

## What can it lead to?

Mathematics at A level will give you the basic tools of a working mathematician, opening doors to a wide variety of courses and careers and, as a course, is greatly appreciated by universities and employers as a clear reflection of hard work and high level thinking skills.

## TRIPS, VISITS AND ENRICHMENT

- Annual trip to Alton Towers
- Maths speakers presenting mathematics live in the context of exciting, real-world applications at Maths Inspiration lecture shows
- UKMT senior maths challenge and other regional challenges each year

## SPECIAL ENTRY REQUIREMENTS

GCSE grade 7 in mathematics.

# Maths and further maths

## What is maths and further maths?

**Mathematics and further mathematics is a more challenging double A level, designed for students with a love of and talent for mathematics.**

## What will I study?

In year 12 students study the full A level mathematics course and take the exam at the end of the year. In year 13 these concepts are extended and new ideas, such as complex numbers, matrices and hyperbolic functions are introduced to complete the A level further mathematics course.

Please note: students who are planning on studying medicine at university are advised not to study A level further mathematics.

## What can it lead to?

Further mathematics at A level gives you both the mathematical and problem-solving skills necessary to study at a top university. Many of our students go on to university to study mathematics, economics, physics or engineering.

## TRIPS, VISITS AND ENRICHMENT

- Annual trip to Alton Towers
- Maths speakers presenting mathematics live in the context of exciting, real-world applications at Maths Inspiration lecture shows
- UKMT senior maths challenge and other regional challenges each year

## SPECIAL ENTRY REQUIREMENTS

GCSE grade 8 in mathematics.

# Media studies

## What is media studies?

Media studies interrogates the media's role in society, culture, politics and the economy. Focusing on communication processes and their impact on the lives of the individual, we explore a range of media platforms such as television, music videos, radio, advertising, newspapers, the internet and video games.

## What will I study?

Media studies focuses on key issues and debates in relation to language, representation, the media industry and audiences. In order to explore the topics at A level, a range of critical and analytical frameworks will be employed to evaluate the way that the media is constructed and operates. Your understanding of media will be developed through theoretical perspectives such as semiotics, feminism, post modernism and post colonialism.

## What can it lead to?

Media studies can lead to a wide range of degrees with many students going on to work in communication, cultural studies, journalism, business and marketing, politics and teaching.

## TRIPS, VISITS AND ENRICHMENT

- Trips to conferences such as Media Live! in Paris
- Trips to media places of interest
- Guest speakers

## SPECIAL ENTRY REQUIREMENTS

GCSE grade 5 in English language or English literature.

# Music

## What is music?

Music develops practical skills in performing and composing as well as much deeper engagement with music history, theory and analysis. The core repertoire studied is classical music from 1750–1930, plus some musical theatre, but students can also perform and compose in a wide range of other styles.

## What will I study?

You will learn to compose music in the style of Haydn and other classical composers, supported by a detailed analysis of how this musical language works. In the second year you will develop your skills in free composition, writing music in any style. You will study the classical and romantic symphony, music of the early twentieth century and musical theatre repertoire by Schonberg, Sondheim and others. In the exam your knowledge will be tested by listening exercises, analytical questions and an essay.

## What can it lead to?

Recent students have gone on to a diverse range of careers, including writing music for theatre, film and television, working on music and sound for games, music outreach, arts administration as well as the more obvious routes of performing and teaching music.

## TRIPS, VISITS AND ENRICHMENT

- Heavily discounted music lessons
- Trips to concerts both regionally and nationally
- Be part of our extensive range of choirs, orchestras and other ensembles

## SPECIAL ENTRY REQUIREMENTS

Two of the following three:  
GCSE music grade 5  
Grade 3 theory  
Grade 5 practical (voice or instrument)



# Philosophy

## What is philosophy?

Philosophy is the study of the underlying nature of everything from knowledge and existence to morality and the mind. You will learn how to analyse and construct arguments on a range of philosophical topics.

An enquiring and analytic mind are a must!

## What will I study?

In the first year of the course you will study epistemology, the theory of knowledge and moral philosophy covering topics such as ethics and will. The second year allows you to develop a deeper knowledge and focuses on the philosophy of religion and philosophy of the mind.

## What can it lead to?

Students go on to study a variety of degree courses as the analytic and logical skills developed in philosophy are respected by many professions.

## TRIPS, VISITS AND ENRICHMENT

- Opportunities to attend master classes and events nationally
- The college runs a philosophy student conference
- Philosophy book club: read philosophical texts and debate with others

## SPECIAL ENTRY REQUIREMENTS

GCSE grade 5 in English language or English literature and a GCSE grade 5 in maths.

# Physical education

## What is physical education?

Have you ever wondered why some people are faster than others, how personality affects performance, or how technology can improve your performance? Then this subject is for you.

## What will I study?

The main areas of study include physiological aspects of physical activity on the body systems; biomechanics and how they help improve performance and prevent injury; the psychological aspects of sport, how memory models can improve movement skills, and how psychological concepts may affect participation and performance in sport. You will also develop your knowledge of the emergence, ethics and evolution of modern sport.

## What can it lead to?

Physical education can lead to many exciting and fulfilling careers, such as teaching, sports development, sports medicine, sports management and physiotherapy.

## TRIPS, VISITS AND ENRICHMENT

- Representation of the college/clubs in your chosen team sport/activity
- Representation of the West Midlands AoC regional team (if applicable)

## SPECIAL ENTRY REQUIREMENTS

We have no specific academic entry requirements; however, involvement in one of the practical sports/activities is required.

# Physics

## What is physics?

Physics involves the study of the universe. It is essential to our understanding of the world around us and challenges our imaginations with concepts like relativity and quantum mechanics.

## What will I study?

The course content is split into six modules. Module one is development of practical skills; module two covers the foundations of physics. Module three focuses on forces and motion and module four studies electrons, waves and photons. In year 13 students complete module five which is the Newtonian world and astrophysics along with module six which is particles and medical physics. Lessons will incorporate an extensive range of experimental work to enhance the learning experience.

## What can it lead to?

The analytical, numerate and critical skills developed in physics open up a wealth of career opportunities from mathematical, scientific, medical and computing areas to the business and financial professions.

## TRIPS, VISITS AND ENRICHMENT

- Physics Olympiad competition opportunities
- Support for the physics aptitude test for applicants to Oxford University
- Regular guest speakers

## SPECIAL ENTRY REQUIREMENTS

GCSE grades 6-6 in combined science or a grade 6 in physics (if studied as a separate science) and a GCSE grade 6 in maths.

# Politics

## What is politics?

The study of politics is the understanding of events which are happening now. These events are not restricted to parliament and congress but impact everyday life for us all.

## What will I study?

You will study the British political and electoral systems including political parties and pressure. You will study the American political system including their Constitution, Congress, presidency and how civil rights, courts and pressure groups function. The course covers political ideologies including conservatism, socialism, liberalism and feminism. You will develop strong analytical skills through the study of government policy and using extracts to build your evaluative skills.

## What can it lead to?

Students go to university to study everything from politics and international relations to politics, philosophy and economics, history, law, English, and medicine.

## TRIPS, VISITS AND ENRICHMENT

- Field trips to parliament and party conferences
- Opportunities to meet visiting MPs, professors and journalists

## SPECIAL ENTRY REQUIREMENTS

GCSE grade 5 in English language or English literature.

# Psychology

## What is psychology?

Psychology is the scientific study of the mind, brain and behaviour, allowing us to analyse and explain the link between them in understanding human behaviour. It's about recognising what makes people tick and how these factors can help us address many of the problems and issues in society today. For example, are criminals born or made? And what impact would this have on rehabilitation?

## What will I study?

The course is divided into three areas. The first is foundations of psychology and includes social, cognitive and biological psychology. The second unit is applied psychology and looks at criminal and clinical psychology and how theoretical knowledge has benefited society. You will also look at the practical tools psychologists have developed to help police in criminal investigations. Finally, you consider how psychology conducts research on humans and animals and the wider impact in society.

## What can it lead to?

Psychology can lead to further study in clinical, forensic, educational and occupational psychology. It also provides an excellent stepping stone to other subject options varying from medicine, social work to marketing and business.

## TRIPS, VISITS AND ENRICHMENT

- Trips vary each year but examples of previous trips include the Natural History Museum, the Freud Museum and visiting Auschwitz
- Visits to universities to experience hands on psychology and research
- Conferences such as the 'Behind Bars' company and Brain days!

## SPECIAL ENTRY REQUIREMENTS

GCSE grade 5 in maths.

# Religious studies

## What is religious studies?

Religious studies explores a range of philosophical and ethical issues surrounding religion, appealing to those who are curious about the 'deeper things' in life and the role and impact of religion on modern society.

## What will I study?

The course is divided into three areas: philosophy of religion, ethics and Christianity. You will study the issues surrounding whether God's existence can be proved and the complexities surrounding religious language and miracles. In ethics, you will study both religious and non-religious ethical theories. In Christianity, students study the history, developments, teachings and practices, and consider how far Christianity has evolved to meet the challenges of being a religious believer in the modern world.

## What can it lead to?

Religious studies is an excellent preparation for many humanities and social science degrees and is well respected by employers due to the literacy and skills of interpretation, analysis and evaluation.

## TRIPS, VISITS AND ENRICHMENT

- Annual Rome trip - shared with Classics
- Visit to Auschwitz with the Holocaust Education Trust
- Conferences and speaker events at national universities

## SPECIAL ENTRY REQUIREMENTS

GCSE grade 5 in English language or English literature.

# Sociology

## What is sociology?

Sociology is the study of social groups and social life in modern societies, and the interaction between individuals within these groups.

## What will I study?

You will study socialisation culture and identity, families, households and education using theoretical debates and arguments, supported by empirical (evidence based) research. You will also review methods of sociological enquiry and you will experience first-hand the application of various research strategies. You will cover power and stratification with topics including inequality and world sociology. Sociology is an essay based discipline, a high standard of written English is required for this subject.

## What can it lead to?

Sociology students go on to study a wide variety of subjects at degree level, including sociology, criminology and psychology. Many courses such as nursing and midwifery specify sociology as a preferred A level subject.

### TRIPS, VISITS AND ENRICHMENT

- Seminars or lectures at local universities
- Trip to the International Slavery Museum in Liverpool

### SPECIAL ENTRY REQUIREMENTS

GCSE grade 5 in English language or English literature.

# Spanish

## What is Spanish?

Spanish is an official language in 20 countries, and is the native language of over 430 million speakers. This makes it the second most common mother tongue in the world.

## What will I study?

You will study a wide range of cultural, historical, political and social topics; including art and architecture, gastronomy, music and dance and twentieth-century history. We will include elements of medieval society, racism and immigration; monarchies and dictatorships; family life; feminism, and LGBTQI+ rights from a Spanish-speaking perspective. You will also study and analyse two pieces of literature and undertake a research piece into an area of personal interest in a Spanish-speaking country.

## What can it lead to?

Students of A level Spanish have gone on to study modern languages, law, English, history, medicine, business studies, economics, music, sciences and maths. Speaking a language is highly valued in the world of business, and fluency in a language can increase your salary by up to 20%.

### TRIPS, VISITS AND ENRICHMENT

- Trips to Spain
- Guest speakers as part of the Aspire programme
- Student led Spanish speaking club

### SPECIAL ENTRY REQUIREMENTS

GCSE grade 6 in Spanish.

# Statistics

## What is statistics?

Statistics is used to research, model, understand, analyse and predict data for situations which involve uncertainty or variability.

## What will I study?

The subject is taught in a practical way, with multiple mini experiments, practical activities and opportunities to collect data and investigate problems and their solutions using different methods of sampling. The course builds on the topic of data handling, practical applications of correlation and regression, including their application in the world of business. Probability theory is expanded with the introduction of binomial and normal distribution. We also study a variety of different hypothesis tests.

## What can it lead to?

Past students have gone on to study a variety of degree courses including medicine, dentistry, geography, geology, biological sciences, sports science, nursing, economics, business studies, sociology and psychology.

## TRIPS, VISITS AND ENRICHMENT

- Annual trip to Alton Towers
- Use of Minitab software and data analysis toolpak in excel

## SPECIAL ENTRY REQUIREMENTS

GCSE grade 5 in maths.

# Textile design

## What is textile design?

Textile design incorporates surface pattern and constructed textiles; these areas then lead to designing items including wallpaper, stationery, fabrics, garments and accessories.

## What will I study?

Drawing is an essential part of the design process and you are encouraged to develop your own style. Throughout the course you will creatively explore a wide range of textile techniques and to put these ideas into context, for example creating garments to then undertake a fashion shoot. Techniques include screen printing, heat transfer, fabric manipulation, weaving, hand and machine stitch. You will have one-to-one tutorial input as well as class demonstrations.

## What can it lead to?

Students often go directly on to degree courses in a range of disciplines. Former students work in the design studios for H&M, Top Man and River Island.

## TRIPS, VISITS AND ENRICHMENT

- Visit to the New Designers in London
- Students are encouraged to visit exhibitions
- Students develop invaluable presentation skills

## SPECIAL ENTRY REQUIREMENTS

GCSE grade 5 in a visual arts subject or submit a portfolio of current work for inspection by a member of the visual arts team.





5 hours of taught lessons per subject per week.



Hungry? There is plenty of choice in the town centre for places to buy something to eat.



If you've finished your timetabled lessons you don't need to stay on campus.



However, feel free to stay and use our many study spaces and facilities.



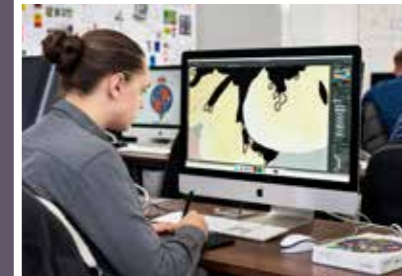
Henry Hickman Library  
Opening Hours  
Monday - Thursday  
7:45am-6:00pm  
Friday  
7:45am-4:30pm



5 minute walk from Stourbridge Interchange.



We don't have a uniform as we want you to be able to express who you are. Just dress respectfully.



Average class size of 19.





# Applying to King Ed's

The entry requirements are **six GCSEs at grade 5 or above**. Please check the subjects individually, as some of them hold their own entry requirements. At King Ed's we have a simple online application procedure for new students. Please check our website for the key dates of our admissions process. To find out more information, please visit the courses section on our website [www.kedst.ac.uk/courses](http://www.kedst.ac.uk/courses)

## Mid September - Applications open

Apply to King Ed's via the online portal, providing your personal details and the subjects you want to study. Once this has been submitted, you'll receive an email asking you to provide a personal statement and career aspirations paragraph. We will then ask for a copy of your most recent school report. Keep monitoring your email inbox, as this will be the way that we will communicate with you.

## End of February - Application submission deadline

All applications should be submitted to us by the end of February.

## End of May - Deadline for accepting your place

Applicants who receive an offer of a place are asked to confirm that they wish to continue with their application.

## End of June, after GCSE exams

### College orientation days

We will invite you to join us for a taster day. This is the first opportunity to experience A level lessons in your chosen subjects. You will also be able to find out more about our enrichment programmes, familiarise yourself with the campus and ask any questions you may have about the college.

## GCSE results day

Shortly before results are published you will receive an email from us with a link that will allow you to upload your results to the college's system and enrol. From results day staff will give you a call if we need to discuss your application or you can submit questions through your online application portal.

## Induction

We will be in touch via email to invite you into college for your official induction into the King Ed's student community.



# Student Support

Becoming a student at King Ed's does require you to have a level of independence, but we fully support you during your time with us. Our specialist teams ensure that your pastoral and additional academic needs are met, allowing you to thrive and reach your full potential while you study with us.

## Personal tutors

All students are assigned a personal tutor (PT) whose primary focus is to provide support and guidance throughout your studies. Your PT is someone whom both you and your parents/guardians can contact at any time if you have concerns. You will meet regularly for one-to-one reviews. Your PT will support your academic progress and help you to develop the skills needed for effective study at A level.

## Lead tutors

Our lead tutors have overall responsibility for your pastoral care. They have access to an array of services for any additional or specialised support required.

## Learning support

King Ed's is a supportive and inclusive environment and our trained team treats disclosures of any learning, physical or mental health issues sensitively. We ask that any issues be disclosed at application as this allows us to make appropriate arrangements and, where required, source special equipment. The team will then work with you throughout your studies to ensure your needs are met.

## Medical welfare and counselling

Students have access to a fully qualified medical welfare officer who can support them regarding a number of health issues, offer advice through drop-ins, regular

appointments, signposting to other health agencies and providing immediate first aid.

We have a team of qualified counsellors on-site who deal with a variety of issues in complete confidence. Students can refer themselves or be referred via any member of staff. Students are offered an initial assessment and followed by a series of 1:1 sessions.

## Careers advice

We have an experienced and fully qualified careers team who offer you one-to-one advice regarding careers, university applications and apprenticeships. They hold progression events throughout the year and also deliver our pathways programmes. They run the Meaningful Employer Engagement (M.E.E) programme which helps you develop plans for your future career through work experience. We have extensive links with industry, commerce and the public sector that ensures that your work experience really will deliver the insights you need to make informed decisions about your future.

## Financial support: 16-19 bursary fund

Each year the college distributes government money provided to assist students who may be experiencing financial hardship. Money is allocated on the basis of household income and can be used by students for anything related to their studies, including transport costs. More guidance can be found on the college's website along with the relevant application form.

## Travel support

Most students living in the West Midlands can make use of the excellent public transport links to travel to college and are entitled to receive the Network West Midlands 16-18 travel card which provides discounted rates.

Those joining King Ed's from further afield can access the college transport which provides a subsidised bus service from the following areas, Bridgnorth, Bromsgrove, Cleobury Mortimer, Wolverhampton and Sedgley and parts of rural Worcestershire.



# Extra curricular opportunities

Being a student at King Ed's involves much more than just studying for your academic qualifications. We want to ensure that your time with us prepares you for the future. We have carefully developed a careers and enrichment programme, which increases your skills and helps to prepare you for your next steps.

## Career pathways

Students with clear career aspirations can join one of our bespoke pathway programmes that offer additional activities for careers in banking/accounting/finance (BAF); dentistry; engineering; law; medicine; pharmacy and teaching. Each individual programme is tailored specifically and offers talks from industry professionals, relevant work experience, assistance with university applications and aptitude tests.

## The Aspire programme

Our Aspire programme is open to any student looking to maximise their potential and develop their skills beyond their A level curriculum. We provide a range of activities and opportunities designed to challenge, inspire and guide you. Students joining the Aspire programme can expect:

- Presentations and debates on a wide range of topics, developing thinking and reasoning skills

- Inspirational talks and lectures by visiting speakers
- Open Day visits to top universities, including Girton College Cambridge and Oriol College Oxford
- Information about summer schools and masterclasses offered by universities
- Guidance on planning independent research into university choices
- Opportunity to complete the Extended Project Qualification

## Clubs and societies

King Ed's provides a wide range of enrichment activities for students and all year 12 students are asked to participate in at least one activity. There really is something for everyone, with staff-led groups which can be both recreational and support your programme of study. There are also student-led groups that cater to

every interest, from 'medical ethics' to 'the debating society'. We have very active dance and drama companies and offer a wide range of musical ensembles such as choirs and orchestras, and many of our students form their own bands. For students who want to participate in a college sports team we have plenty of opportunities to

get involved; with swimming, cricket, football, netball, hockey and rugby teams. We also have a fully equipped gym which is available to all students.





# Additional qualifications

We offer a range of supplementary qualifications that you can take in addition to your core programme. You can apply for these as part of the start-of-year enrichment sign-up process. Please note that some of these opportunities have limited availability.

## Extended project qualification (EPQ)

The EPQ is a project-based qualification you can take on something you are passionate about or can be linked to something you are studying. You will gain around half an A level, which also holds a UCAS points value. The submission could be either a report, essay, creative artefact or an event or performance. You will agree on your area of study in year 12 and undertake most of the work in year 13.

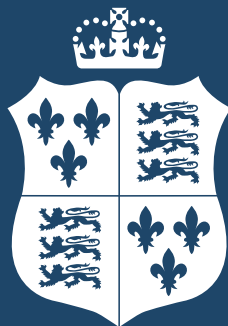
## Level 3 certificate in financial studies (CeFS)

The CeFS qualification is awarded by the Institute of Finance University College, carrying up to 70 UCAS points and is assessed by two external exams. You will cover a range of areas such as making and considering options, handling data, and financial capability. You will experience teamwork and communication skills and have a better ability to understand the financial services sector.

## Level 3 mathematical studies (core maths)

This one-year qualification carries a maximum of 20 UCAS points and will build on your existing GCSE maths knowledge by developing problem-solving skills, the ability to communicate your mathematical ideas in the areas of statistics, finance and estimation. You will need to have achieved a GCSE grade 5 in maths to do this course.





**KING EDWARD VI COLLEGE**  
STOURBRIDGE  
— EST. 1552 —

King Edward VI College, Stourbridge DY8 1TD  
T: +44 (0) 1384 398100  
E: [admissions@kedst.ac.uk](mailto:admissions@kedst.ac.uk)  
[www.kedst.ac.uk](http://www.kedst.ac.uk)