

# WELCOME TO DRAMA!

  
**KEEP  
CALM  
AND  
do  
DRAMA**

Drama

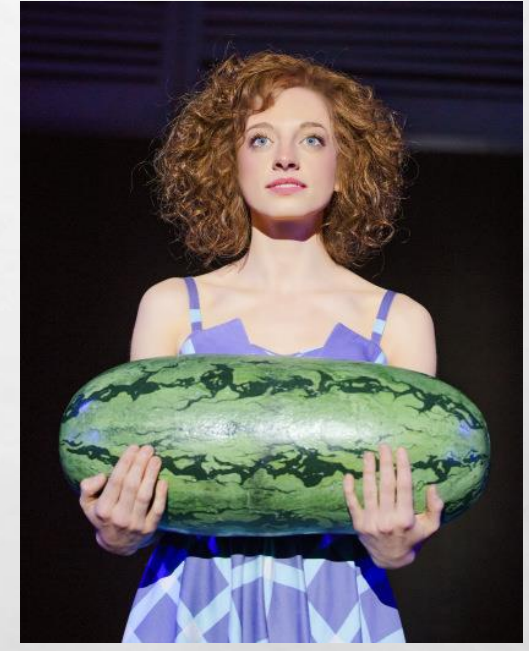


KING EDWARD VI COLLEGE  
STOURBRIDGE





# WHY STUDY DRAMA HERE?



All these students (from left to right, Jack Loxton, Lawrence Walker, Esther Smith and Jessie Hart) have had careers in theatre, TV and film. Jack has been nominated for an Olivier Award and Esther played the main villain in world premier of the Harry Potter play in the West End.



# CHECKLIST

- READ THIS POWERPOINT, THE STUDENT HANDBOOK AND THE STARTER PACK.
- COMPLETE ALL COMPULSORY TASKS IN THE STARTER PACK TO THE BEST OF YOUR ABILITY.
- MAKE A NOTE OF WHAT TO BRING TO LESSONS AND MAKE SURE YOU ARE EQUIPPED (SEE THE HANDBOOK).
- MAKE SURE YOU KNOW WHAT IS EXPECTED IN TERMS OF HOMEWORK AND AFTER COLLEGE REHEARSALS (SEE THE HANDBOOK).
- MAKE SURE YOU HAVE MADE A NOTE ABOUT KEY DATES AND HAVE READ AND UNDERSTOOD THE DEPARTMENT'S POLICY ON ATTENDING LONG TRIPS DURING EXAM TERMS (SEE THE HANDBOOK).
- MAKE SURE YOU HAVE READ AND UNDERSTOOD THE DEPARTMENT'S EXPECTATIONS (SEE THE HANDBOOK).
- MAKE SURE YOU HAVE READ AND UNDERSTOOD THE IMPORTANT INFORMATION ABOUT ATTENDANCE AND PUNCTUALITY (SEE THE HANDBOOK).





# THE COURSE

- There will be writing! It's an A level and so must have a substantial academic element to the course. This is the same for all exam boards. One three hour paper at the end of Year 13 on two set plays and a production.
- A big commitment outside of lessons in Year 13: after college and lunchtime rehearsals are normal, as is the odd weekend rehearsal.
- Good attendance is so important because you can impact on the progress of other students. If you think you might struggle with this commitment, ask yourself whether drama is the right subject for you.
- Can be quite physically intensive and demanding (so dress appropriately for drama lessons).
- The handbook contains a lot of information about what you will study and how you will be assessed.



# AVAILABILITY

- Note that in **the summer term of year 12 and in the autumn and spring terms of year 13** you will not be able to attend long residential trips during college time. This may include the French, German or Spanish exchange programmes, which are not compulsory. You will need to be available to rehearse and to perform in your exam pieces. Two thirds of the drama A level are formally assessed within the first two years, not, as in other subjects, at the end of your studies.





# SUMMER WORK



- See the starter pack for a number of compulsory and suggested tasks and activities to keep you busy over the summer.